

Designator
[01] - COVER PAGE.SchDoc

Designator
[02] - BLOCK DIAGRAM.SchDoc

Designator
[03] - CONNECTORS

Designator
[04] - DOC REVISION HISTORY.SchDoc

TEMPLATE NOTES

Set Project Parameters

1) Go to Project -> Project Options -> Parameters
2) Set Project and Version

Mark Not Fitted Components as

NF

Net Class Example

① Net Class
ClassName: PCIe

Differential signal example

DIFF100

TITLE Examples (You can change the color to reflect your company color)

PAGE TITLE

Peripheral / Group of component title

Smaller Ttitle

Schematic Status Explanation

DRAFT - Very early stage of schematic, ignore details.
PRELIMINARY - Close to final schematic.
CHECKED - There should not be any mistakes. Tell the engineer if you find one.
RELEASED - A board with this schematic has been sent to production.

04A24

Variant: [No Variations]

16/04/2024

V0

DRAFT

Page	Index	Page	Index	Page	Index	Page	Index
1	COVER PAGE	11		21		31	
2	BLOCK DIAGRAM	12		22		32	
3	CONNECTORS	13		23		33	
4	DOC REVISION HISTORY	14		24		34	
5		15		25		35	
6		16		26		36	
7		17		27		37	
8		18		28		38	
9		19		29		39	
10		20		30		40	

DESIGN CONSIDERATIONS

DESIGN NOTE:
Example text for informational
design notes.

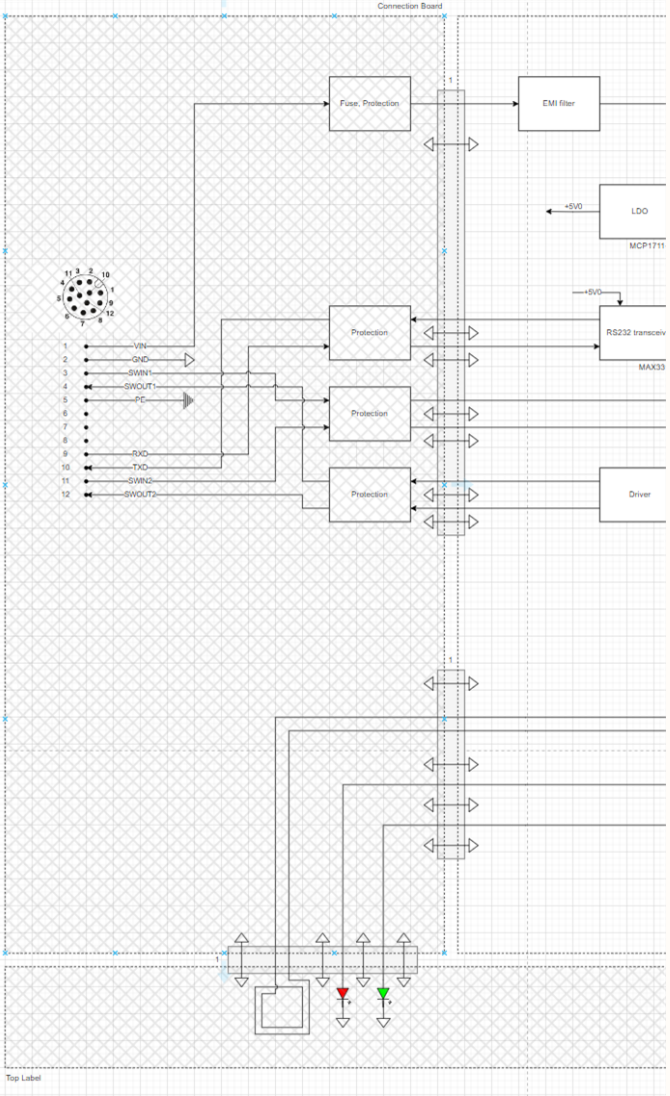
DESIGN NOTE:
Example text for critical
design notes.

DESIGN NOTE:
Example text for cautionary
design notes.

LAYOUT NOTE:
Example text for critical
layout guidelines.

04A24

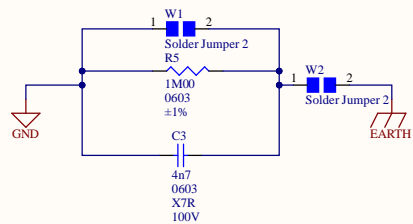
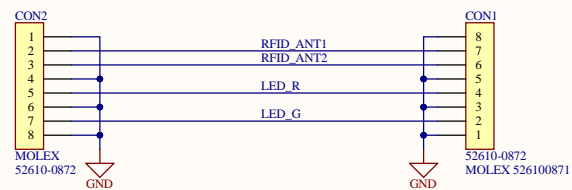
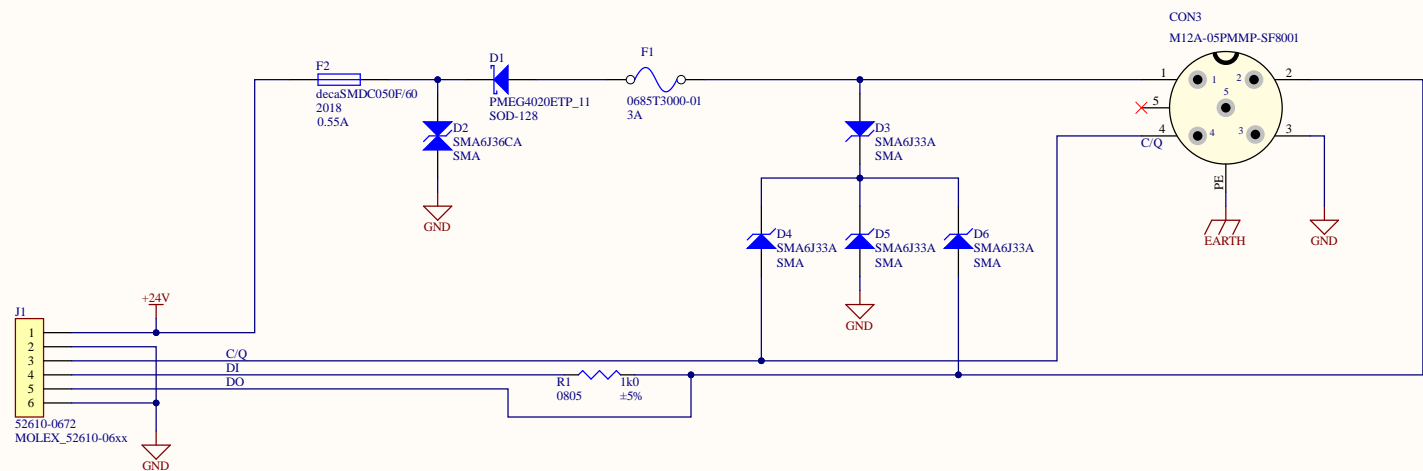
(Block Diagram)



CLOCK/PE & PDI

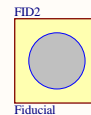
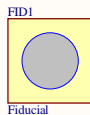
04A24

(Connectors)



FIDUCIALS

TOP



Title 04A24		Kronotech Srl Via Adriatica, 284 33030 - Basaldella (UD) Italy
Size: A3	Revision: V0	
Date: 16/04/2024	Sheet 4 of 5	

	1	2	3	4	5	6	7	8
A	<div>DOC: REVISION HISTORY</div>							
B								
C								
D	<div>CLOCKS (CPU & DUE)</div>							
	1	2	3	4	5	6	7	8

Title 04A24		Kronotech Srl	
Size: A3		Revision: V0	
Date: 16/04/2024		Sheet 5 of 5	
		Via Adriatica, 284 33030 - Basaldella (UD) Italy	